



# ING 2025

## Ink and Press Vendor Panel

**manroland Goss web systems Americas**

**Transformation of company after 2018 merger**

**Newspaper Segment**

**Recent Mainstream Project Success**

# manroland Goss Locations



Exeter, New Hampshire

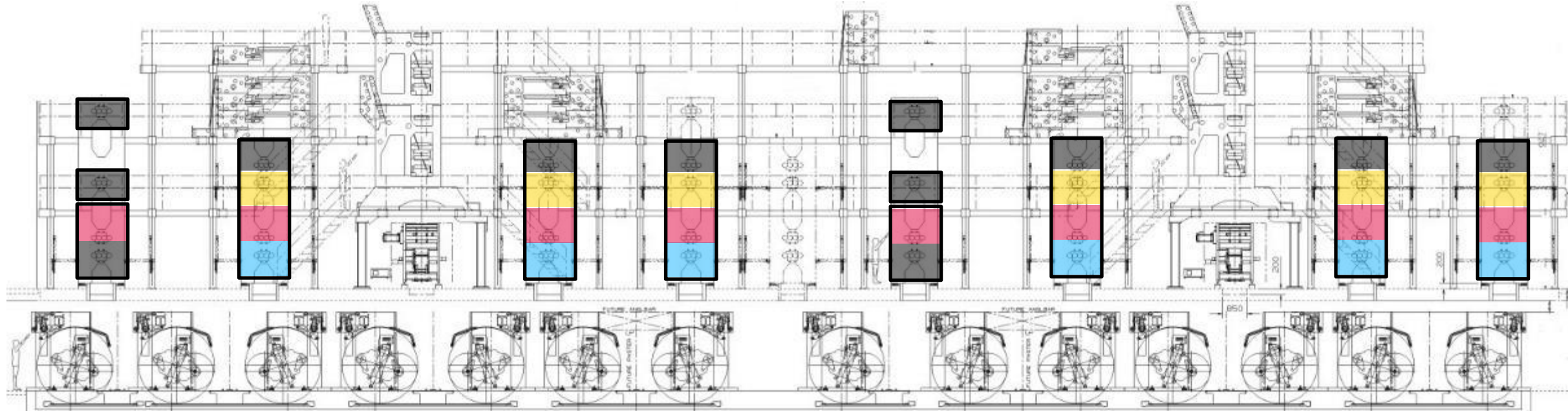
Preston, England

Augsburg, Germany



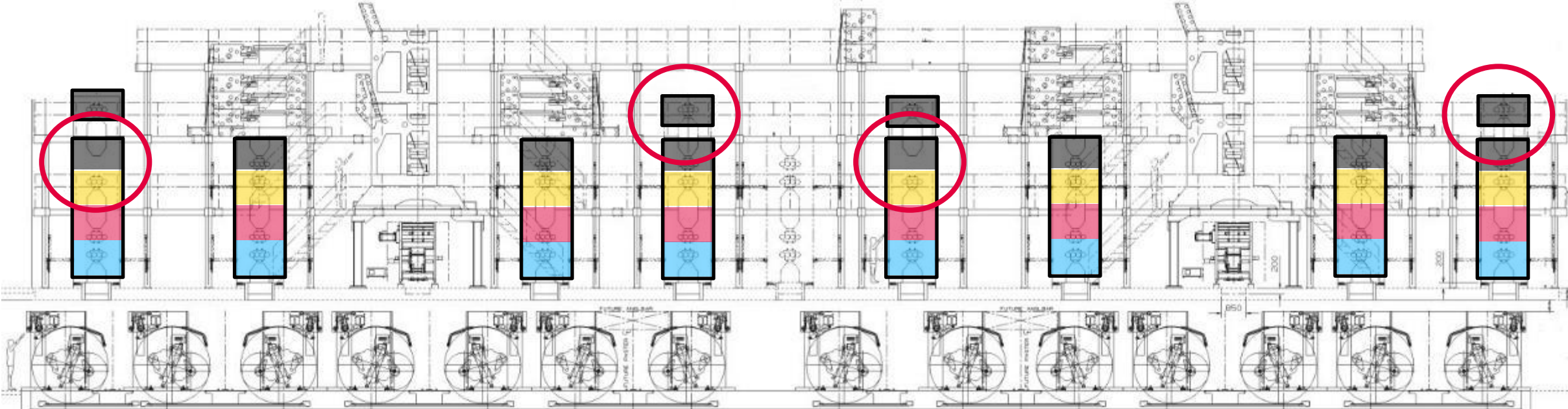
# MAINSTREAM M80

## Initial Configuration



# MAINSTREAM M80

## Final Configuration



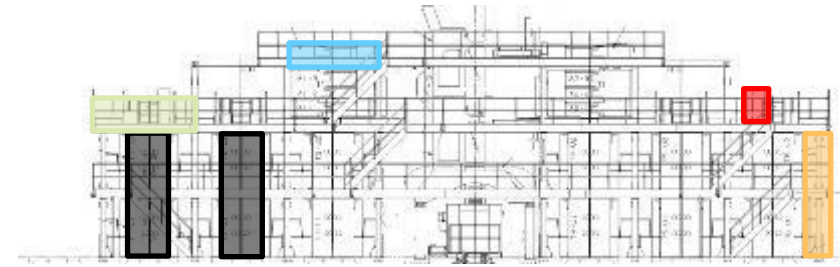
# MAINSTREAM M80

## Origin of the major components



### ROANOKE (T1-2 + additional):

- 2 complete print towers (Qty needed x 2)
- Angle Bar Assembly in DDM Requirements
- Potentially reusable structure set for repositioning Grafikontrol equipment
- Potentially reusable set of platform and guardrails for rearranging platforms around monochrome groups.
- Web up components
- All the cabinets, electrical components and cables associated with the 2 printing towers.



OU2101



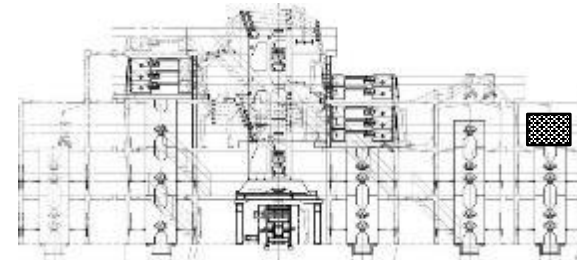
### LE PROGRES:

- Frame elements for 2 monos

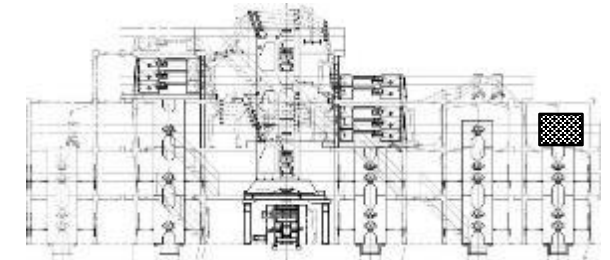
### NEW:

Unavailable components and assembly items

- Parts formats: Frames, cylinders, bearings, uniflanks,....
- Auxiliaires, spray bars, etc.
- All assembly elements (screws, seals, fittings, pipes, cables, etc.)



MC-HA006



MC-HA007